

PART OF THE SE 1/4 SEC. 23, T.5N., R.1W., S.L.B. & M.

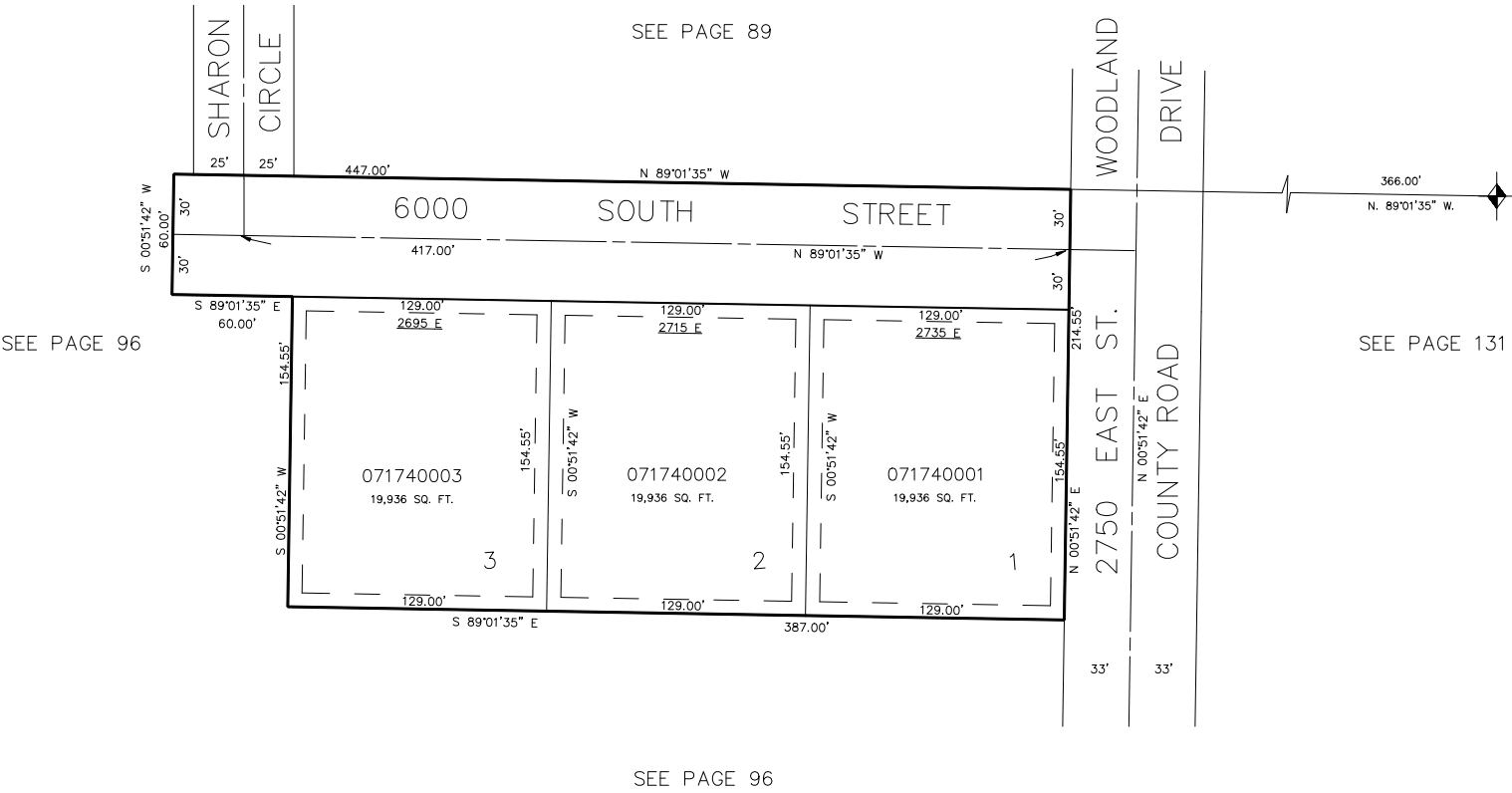
174

RAINTREE SUBDIVISION

IN WEBER COUNTY

TAXING UNIT: 159

SCALE 1" = 50'



7' UTILITY & DRAINAGE EASEMENTS EACH
SIDE OF PROPERTY LINES AS INDICATED
BY DASHED LINES EXCEPT AS OTHERWISE
SHOWN.

FOR COMPLETE ENG DATA SEE
ORIGINAL DEDICATION PLAT IN
BOOK 19, PAGE 19 OF RECORDS.